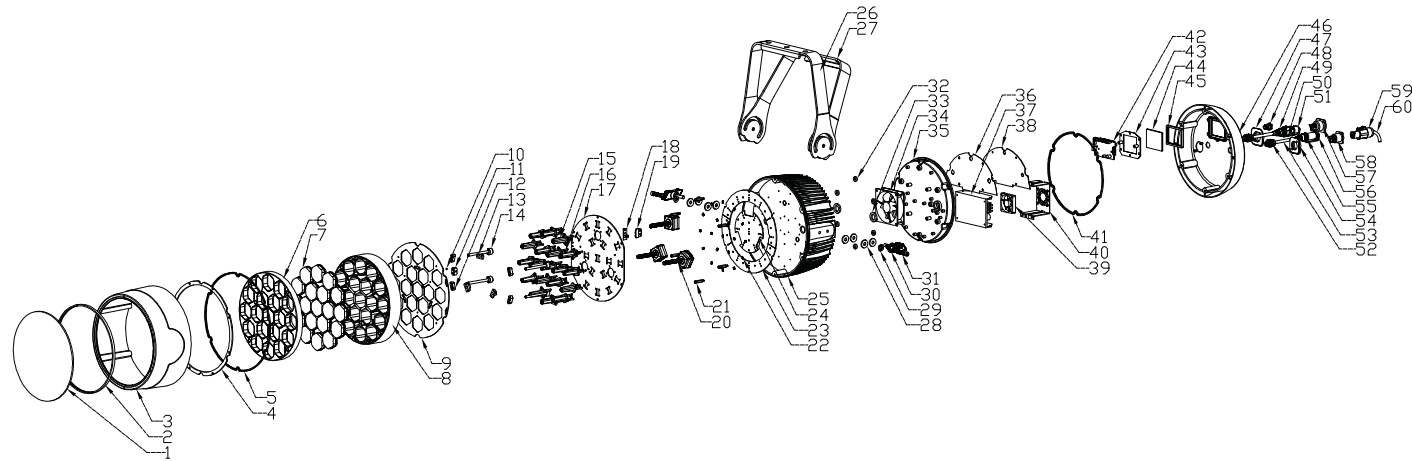


SN.	PART CODE	DRAFT NO.	ITEM NO.	QTY
1	5070000103	YA40201-06	toughened grass	1
2	7030200079	YA40201-19	waterproof rope for front cover	1
3	7060000029	YA40201-03	front cover	1
4	7010501491	YA40201-09	grass pressing plate	1
5	7030200078	YA40201-08	waterproof rope for light housing	1
6	7030100242	YA40201-05	lens upper cover	1
7	5050100076		lens	19
8	7030100243	YA40201-18	barndoor ring	1
9	7010501492	YA40201-10	zoom location plate	1
10	7050500001		magnet: 3*2	1
11	7010501494	YA40201-14	magnet fixing plate	1
12	7030100244	YA40201-20	sliding block	4
13	7030100265	YA40201-26	thread motor flange	3
14	7050400006	YA40201-17	guide pillar	4
15	7030100264		black holder:TOP-PH68FS	19
16	5050100077		grass pillar:TOP-L68F	19
17	7010501493	YA40201-11	fixing plate	1
18	8010000070	S70202-04A-002	magnet sensor PCB	1
19	7010501495	YA40201-15	Magnet fixing plate	1
20	5030000042		motor:14HSL1008C-65T8-6	3
21	7020300103	YA40201-21	copper pillar1 M4*25.6+6	6
22	5020100152	PBCB-14F6E-A	LED	19
23	8010001203	YA40203-04B-001	Big LED PCB	2
24	8010001201	YA40203-03B-001	Small LED PCB	1
25	7060100090	YA40201-01	light housing	1
26	7010501497	YA40201-12	outer bracket	1
27	7010501498	YA40201-13	inner bracket	1
28	7030100059		round washer : 22* 8*3	8
29	7020200004		flat washer: 8* 17*1	2
30	7020600092	LJ-Y31202-52	knob:MS*30	2
31	7020000372		cup head inner hexagon screw:MS*36	2
32	7030200028	JS-TY-LA-860-JQC	waterproof silicon rope C	6
33	7030200085	YA40301-31	round waterproof rope	2
34	5010200007	PL-FS-04	9225 waterproof fans assembly	1
35	7060200049	YA40201-04	bottom cover	1
36	7030200080	YA40201-29	SILICONE	1
37	5040000134	K18-UP400S28	PSU	1
38	8060000511	CPCS0441-2U01	driver PCB	1
39	8010001205	YA40203-01E-001		1
39	5010000003	PLGY0084	fans1 DFH5010B	1
40	7010501496	YA40201-16	fixing plate for fans	1
41	7030200077	YA40201-07	aterproof rope for back cover	1
42	8060000533	CPCS0441-1U01		1
42	8010001119	YA40203-02B-001	tough display	1
	8010000063	LA3702-04C-001		1
43	7010500353	LA3158-05	silicone pressing plate	1
44	5070000049	LA3702-04	toughened grass for display	1
45	7030200009	LA3702-03	waterproof silicone	1
46	7060200048	YA40201-02	back cover	1
47	6120600020	SCNAC-FPX	seal cartridge; output>	1
48	7030100247	LD-FCL-26WHD7	air valve:M12*1.5	1
49	6120800006	NC5FX-HD	DMX connector:5P; female>	1
50	7030100253	YA40301-34	cover connection cable	2
51	7030100267	YA40301-33	DMX socket end cap; female>	1
52	6120500008		joint:PG9	2
53	5060400050	XC-XH-38	waterproof DMX cable	2
54	6120600021	SCNAC-MPX	seal cartridge; input>	1
55	6120800007	NC5MX-HD	DMX connector:5P; male>	1
56	7030100248	YA40301-32	DMX socket end cap; male>	1
57	6120300001	NAC3FPX	powercon socket; out>	1
58	6120200001	NAC3MPX	powercon socket; in>	1
59	6121000001	NAC3FX-W	powercon plug	1
60	5061500006		US power cable:UL 14AWG/3C L=1830	1
	5060600042	XC-DY-94	Euro power cable:VDE 3*1.5Mm L=1830	1
	6120100012		fuse holder; US>	1
fuse class	6110000005		fuse; US> 1 T4A/250V	1
	6120100010		fuse holder; Euro>	1
	6110000003		fuse; Euro> 1 T2A/250V	1

# ELATION SIXPAR Z19 IP PARTS LIST - 07.13.16



Information contained within this document is proprietary and confidential. Any reproduction and/or distribution of any part of this drawing without the written consent by **ELATION PROFESSIONAL** is strictly prohibited. Diagrams and/or part numbers herein subject to change without notice.